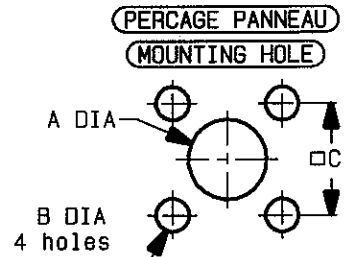
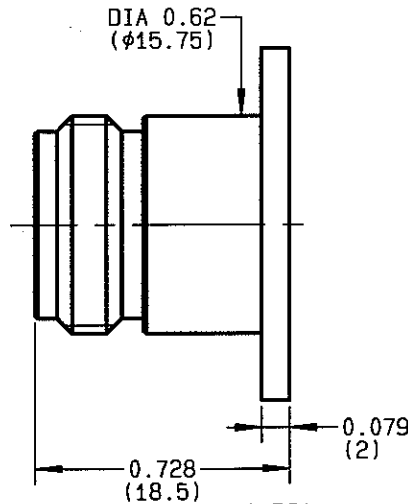
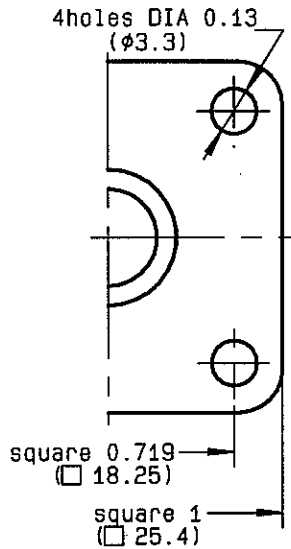


**FEMALE CAP  
WITH FLANGE**

**R161.849.000**  
**SERIES N**



	MM		INCH	
	maxi	mini	maxi	mini
A *	*	*	*	*
B	3.3	3.2	0.13	0.126
C	18.35	18.15	0.722	0.715

A DIA \* : according to customer's application (selon application du client)

NOMINAL IMPEDANCE	NA	Ω
FREQUENCY RANGE	NA	GHz
TEMPERATURE RATING	-55/+155	°C
V.S.W.R	NA +	x F(GHz)Maxi
RF INSERTION LOSS	NA	√F(GHz) dB Maxi
VOLTAGE RATING	NA	Veff Maxi
DIELECTRIC WITHSTANDING VOLTAGE	NA	Veff Mini
INSULATION RESISTANCE	NA	M ΩMini
HERMETIC SEAL	NA	Atm.cm <sup>3</sup> /s
LEAKAGE (pressurized only)	NA	
MECHANICAL DURABILITY	500	Cycles
WEIGHT		gr
SPECIFICATION		

CABLES :

OTHERS CHARACTERISTICS

CABLE RETENTION	NA	N Mini
CENTER CONTACT RETENTION		
Axial force - mating end	NA	N Mini
Axial force - opposite end	NA	N Mini
Torque	NA	cm.N Mini
RECOMMENDED TORQUES		
Mating	NA	cm.N
Panel nut	NA	cm.N
Clamp nut	NA	cm.N

CONNECTOR PARTS

MATERIALS

FINISH

(all values are given in micrometers)

BODY  
OUTER CONTACT  
CENTER CONTACT  
INSULATOR  
GASKET  
OTHERS PIECES

BRASS

BLACK-CHROMIUM 0.2 OVER NICKEL 2

BONUMINI

ISSUE  
**9811D01**

CREATION DATE  
**13-DEC-93**

FILE PART-NUMBER  
**EPC 96-07**



**RADIALL®**

The information given here is subject to change without notice. Design changes may be in order to improve the product.

*Connect to the future*